

# 100 Country Houses

NEW RURAL ARCHITECTURE

edited by Beth Browne



Hugendubler  
Publishing

# INDIAN NECK RESIDENCE

HAMMER ARCHITECTS

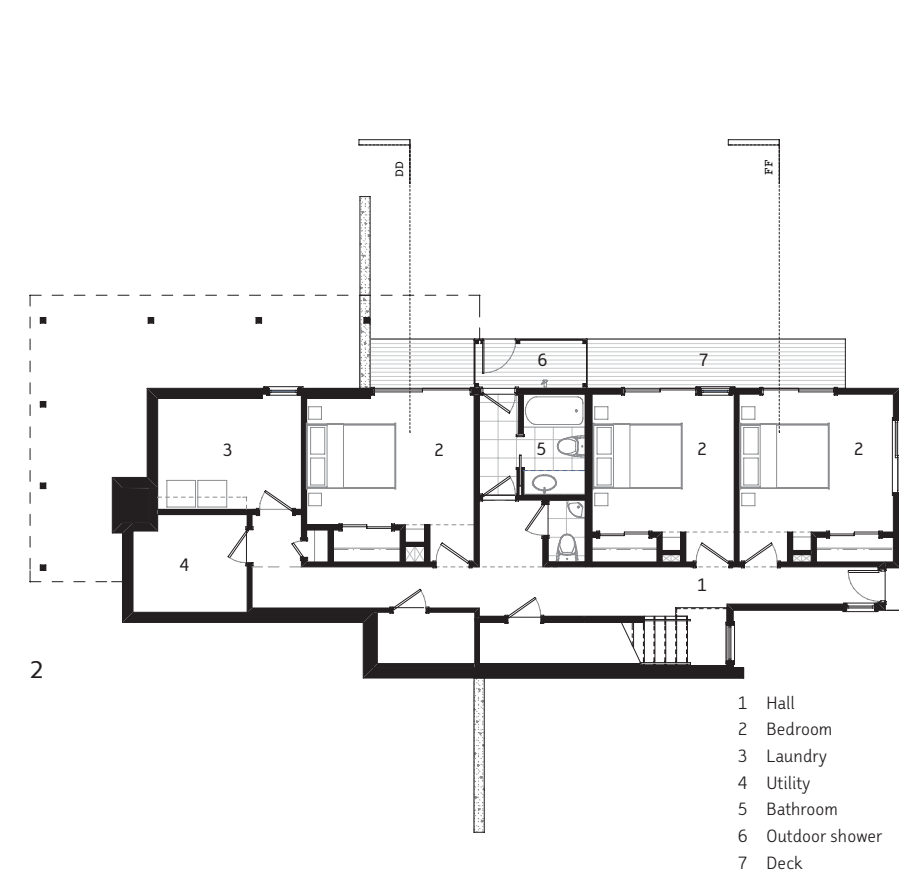
WELLFLEET, CAPE COD, MASSACHUSETTS, USA

This new four-bedroom home is situated on a heavily wooded hillside overlooking a tidal marsh. The house is informed by the tradition of modern residential architecture that prevailed on this portion of Cape Cod in the mid 20th century. It has been designed to visually connect interior and exterior living spaces, to provide ample natural light and ventilation and to carefully integrate the built environment with the landscape. The home is nestled into the hill and oriented to maximise views on the waterside.

Natural ventilation was the critical sustainable-design concern as the house is occupied primarily during the summer months. To eliminate the need for air-conditioning and reduce energy consumption, the afternoon sun is shielded on the southwest façade by the overhanging roof, while the large view windows on the opposite side are oriented to permit ample ventilation and daylight and to minimise solar gain. The sloped ceiling of the main living space directs warm air to several sets of high, motorised awning windows. These windows are protected from rain by the overhang, allowing their continuous use, even in inclement weather.

A linear metal canopy delineates the entrance. It is detailed as an attachment to a wall and is physically separated from the main volume of the house by tall vertical windows. This layering element encloses the main staircase and entry hall and is distinguished by its board-formed concrete foundation and horizontal tongue-and-groove cedar siding. The upper floor, which is level with grade on the entry side, contains the living and dining rooms, kitchen and master bedroom. The living room wing is distinctly articulated from the master bedroom wing by its higher volume, clerestory strip windows and large patio doors opening onto the deck and terrace. The lower level has three walkout bedrooms on the waterside, each with a private deck.

The red cedar clapboards, tongue-and-groove siding and trim have been finished with a clear stain. The metal fascias at the roof and canopy enhance the transition between the building and the sky. Simple volumes, expansive glass walls and exposed wood structural beams and roof decking characterise the interiors. Floors are European steamed beech, linoleum, slate and quarry tile.



- 1 Caption to come
- 2 Caption to come
- 3 Caption to come
- 4 Caption to come
- 5 Caption to come

Photography: [to come]