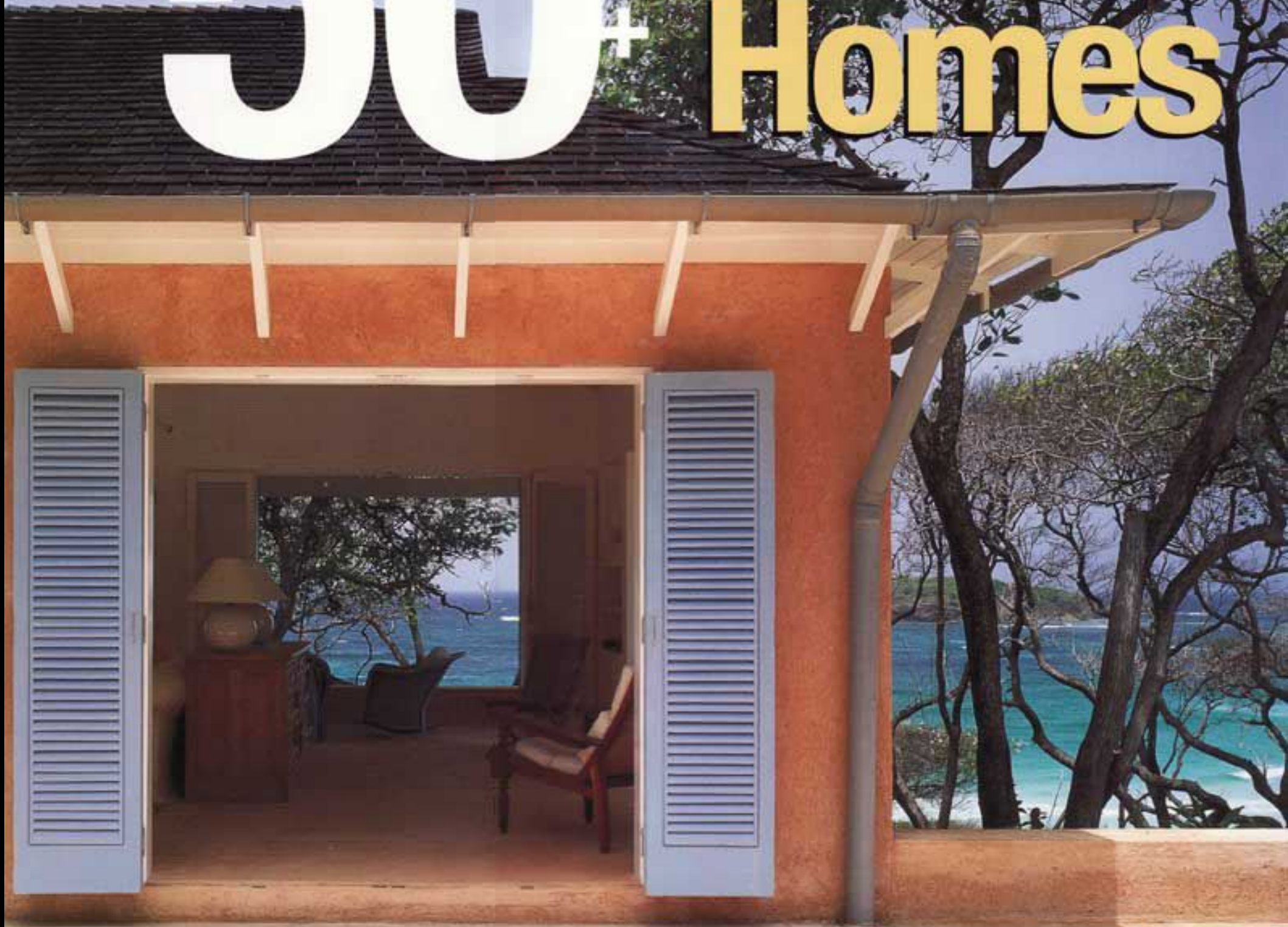


50+ Vacation Homes



Edited by Andrea Boekel

images
Publishing

Truro (Cape Cod),
Massachusetts, USA

Bayside Residence

Hammer Architects

This 190-square-metre home is located on a coastal bluff overlooking Cape Cod Bay. The house runs along the top of a ridge and is intended to harmonise with the environment. The design developed as a trapezoidal footprint with two wings separated by a dramatic entrance hallway. The two distinct volumes articulate and express the functional separation of living and sleeping spaces.

The living wing has been rotated to align with views of the sunset, the bay and Provincetown. The central space on this side of the house contains a large, communal living area that features soaring full-height windows, as well as a dining area, sitting area and a galley kitchen that leads to a screened porch.

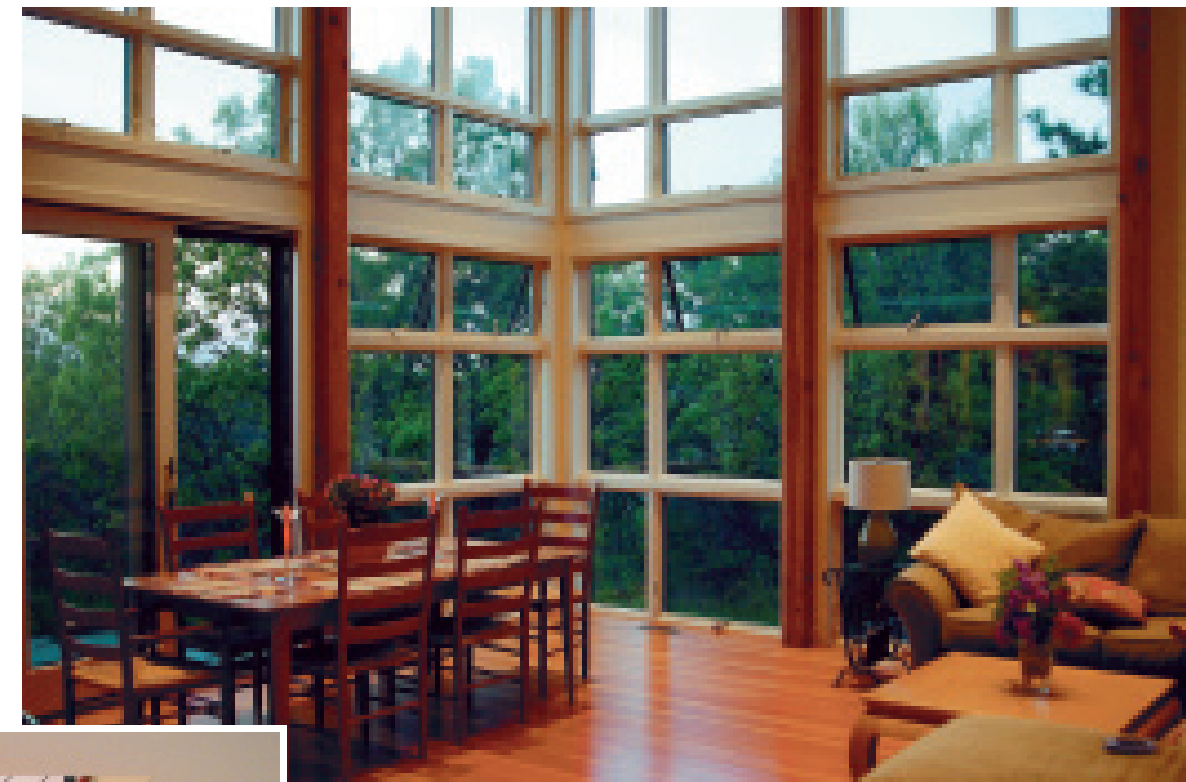
The smaller-scale bedrooms are nestled in the home's opposite wing. The bedroom wing is located parallel to the edge of the property to better utilise the contours of the land and facilitate the entry. Much of the home's allure derives from its use of alcoves and nooks as counterpoints to expansive shared spaces.

The wide central staircase is constructed at an angle that mimics the sloping outdoor terrain that surrounds the house. An inviting second-storey loft space affords privacy but looks down over the open living and dining areas. The loft and an outdoor deck share a sweeping bay view that extends north to Provincetown.

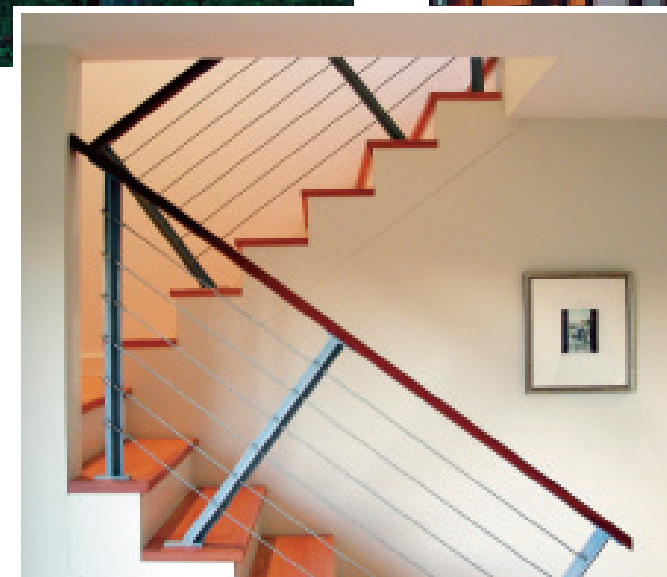
Windows are carefully placed to introduce natural light, capture prevailing southwest breezes and provide natural ventilation. These windows are shielded from rain and sun by the broad overhanging roof.



1



3



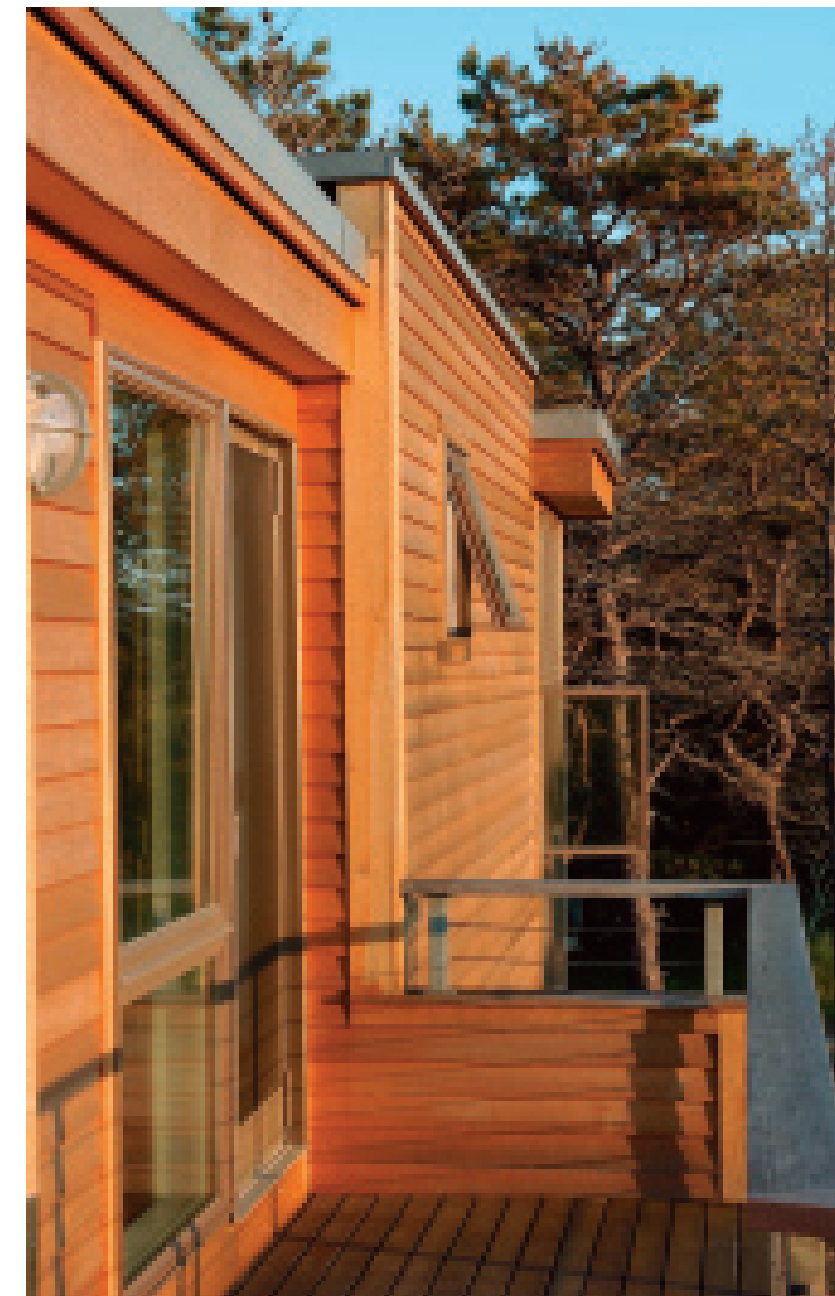
2



4



5



6